

If you behind a company firewall have the administrator open port 9000 to our web server. It can be restricted to a specific ip address. The address of our web server is 162.114.137.11.

Only use Internet Explorer to access the SMIS application. It will not work with other browsers.

Make sure that the Java runtime is 32 bit.

Oracle Technology Network > Java > Java SE > Downloads

Overview Downloads Documentation Community Technologies Training

Java SE Runtime Environment 8 Downloads

Do you want to run Java™ programs, or do you want to develop Java programs? If you want to run Java programs, but not develop them, download the Java Runtime Environment, or JRE™.

If you want to develop applications for Java, download the Java Development Kit, or JDK™. The JDK includes the JRE, so you do not have to download both separately.

JRE 8u131 Checksum

Java SE Runtime Environment 8u131

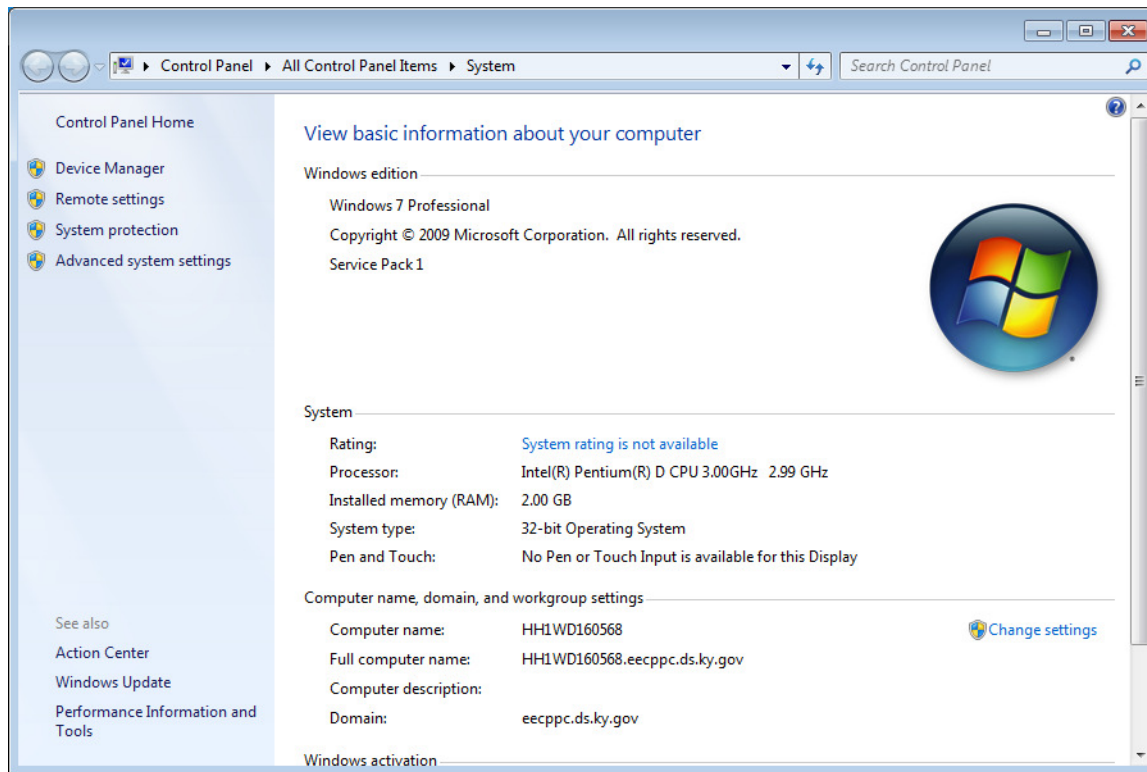
You must accept the [Oracle Binary Code License Agreement for Java SE](#) to download this software.

Accept License Agreement Decline License Agreement

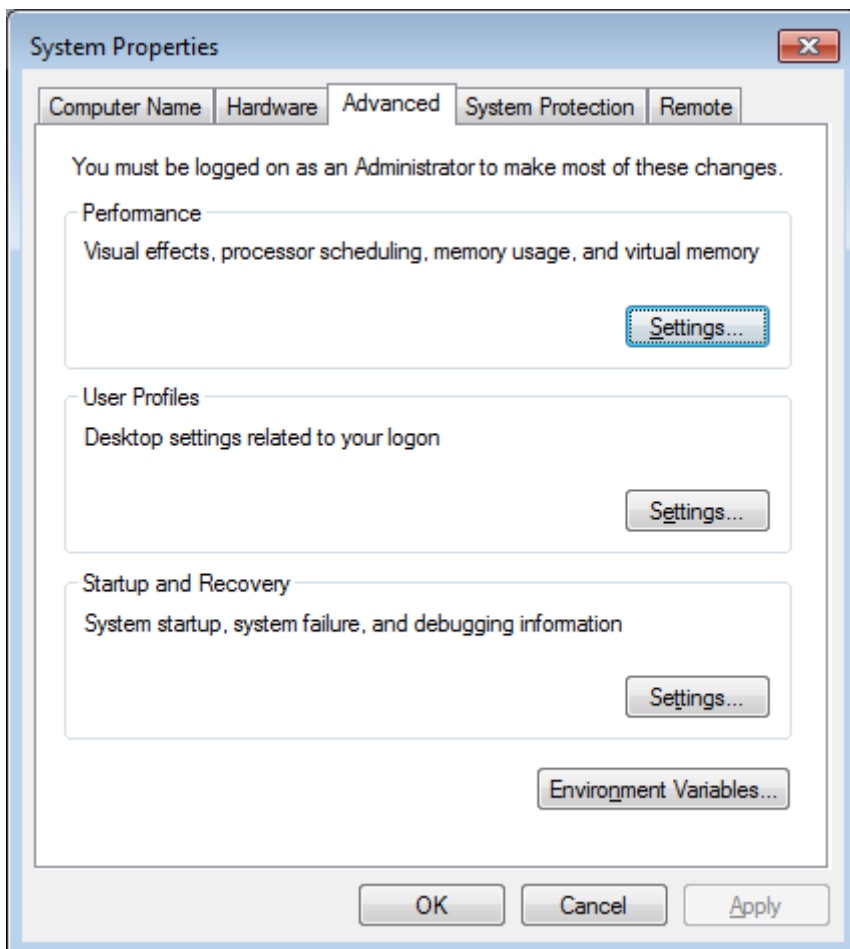
Product / File Description	File Size	Download
Linux x86	59.13 MB	jre-8u131-linux-i586.rpm
Linux x86	74.98 MB	jre-8u131-linux-i586.tar.gz
Linux x64	56.47 MB	jre-8u131-linux-x64.rpm
Linux x64	72.4 MB	jre-8u131-linux-x64.tar.gz
Mac OS X	63.92 MB	jre-8u131-macosx-x64.dmg
Mac OS X	55.54 MB	jre-8u131-macosx-x64.tar.gz
Solaris SPARC 64-bit	52.05 MB	jre-8u131-solaris-sparcv9.tar.gz
Solaris x64	49.92 MB	jre-8u131-solaris-x64.tar.gz
Windows x86 Online	0.7 MB	jre-8u131-windows-i586-iftw.exe
Windows x86 Offline	54.83 MB	jre-8u131-windows-i586.exe
Windows x86	60.18 MB	jre-8u131-windows-i586.tar.gz
Windows x64 Online	62.62 MB	jre-8u131-windows-x64.exe
Windows x64	63.97 MB	jre-8u131-windows-x64.tar.gz

Click on System in Control Panel.f

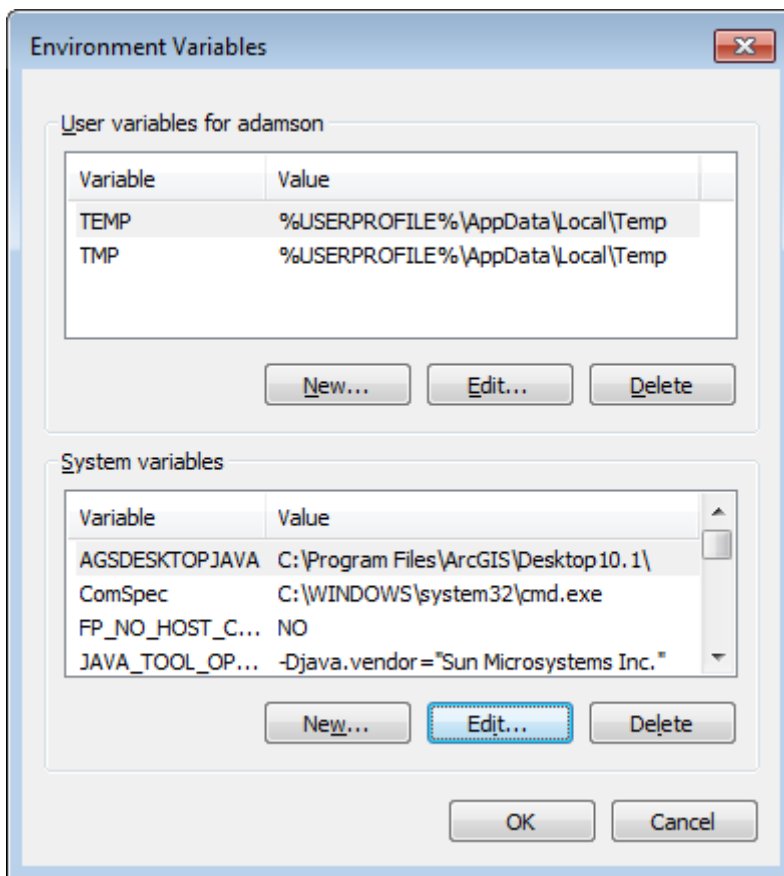
Select Advanced System Settings in Windows 7 or Windows 10



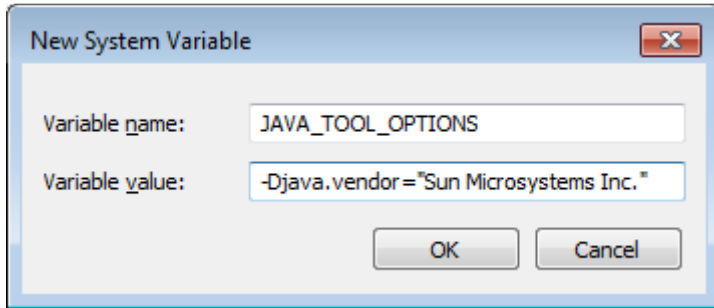
Select the Environmental Variables button at bottom under the Advanced tab.



Select New System Variable in lower half of screen



Enter the new variable as shown below and click OK. Make sure you enter the dash at the beginning of the value string.



The image shows a standard Windows-style dialog box titled "New System Variable". It has a close button (X) in the top right corner. Inside the dialog, there are two text input fields. The first field is labeled "Variable name:" and contains the text "JAVA_TOOL_OPTIONS". The second field is labeled "Variable value:" and contains the text "-Djava.vendor="Sun Microsystems Inc."". Below the input fields are two buttons: "OK" and "Cancel".

You will need to close all browser windows before trying to access SMIS.

Using these settings I have finally been able to run the application on my pc using Java 8. My operating system is Windows 10, 64 bit.

If the environment variables don't work then download Java 6. The easiest way to find where to download Java 6 is to "Google" "java 6".